

**D·ECKWEILER**  
connecting flow to *purity*



**UNIQUE:**  
**ZEROCON<sup>®</sup>**

The new connection system.

As tight as a weld seam.

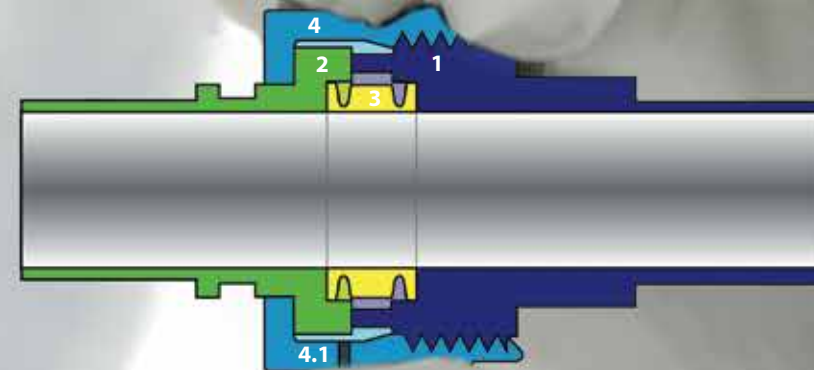
# UNIQUE: ZEROCON®

## The new connection system for those who demand the best

ZeroCon® is the new, patented, 100% stainless steel connection system for safe and rapid connection of tube systems. With ZeroCon® you make zero compromises!

The screwed ZeroCon® system comprises four components:

- 1 Screw joint
- 2 Force joint
- 3 Seal
- 4 Nut
- 4.1 Leak test port

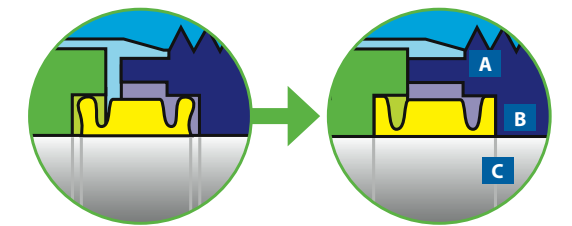


The advantages at a glance:

### Completely leakproof (A)

Because the same material is used throughout, the connection is as tight as a weld seam (helium leak rate  $\leq 10^{-13}$  mbar l/s)

### No dead space (B) and perfect pharmaceutical barrier (C)



*The seal ring adapts to fit perfectly when pressed in, ensuring complete sealing and no dead space*

### Robust connection

Suitable for applications involving high-pressure, critical vacuum and extreme temperature conditions

### Dynamic stress resistance

Anti-twist locking and outward precision fit prevent negative impact of external forces and torques

### Temperature and pressure stable

From - 273 °C (-459 °F) to +350 °C (+662°F)  
up to 450 bar (6550 psi)

### No flow disturbances

### Highest surface quality

Ra  $\leq 0.4 \mu\text{m}$  (15  $\mu\text{inch}$ ), electropolished  $\leq 0.25 \mu\text{m}$  (10  $\mu\text{inch}$ )

### No outgassing of material

1.4435 / UNS S31603 (316L)

### Easy installation

Self-centering, end stop and integrated leak test port

### Maintenance-free

No seal replacement required unlike with soft seals

# UNCOMPROMISING: ZEROCON®

## The flexible solution for everyone who refuses to compromise on safety.

ZeroCon® is the simple and efficient solution if you want a new, built-to-last connection. It combines all the advantages of a detachable connection with those of a welded connection. For this reason, ZeroCon® can also be used in all areas of application and industries and is suitable for all applications. Try it for yourself and see.

The modular design of the ZeroCon® connection means that there is nothing to stop you adding to or adapting the system at a later point. System maintenance and connection with further systems can be carried out rapidly, easily and cost efficient.

Advantages of the ZeroCon® connection	Semi-conductor	Pharmaceutical	Fine chemicals
• As tight as a weld seam	■		
• No loss of medium/leakage of toxic media into the environment or contamination of the medium from outside	■		■
• Use in ultra-high vacuum applications	■		
• Meets the highest purity standards	■	■	■
• 100% sterilizable, no deposits, films of bacteria or cultures		■	■
• Briefer flushing times	■	■	■
• No cavities for medium to collect in	■	■	■
• External forces and/or torques do not affect the connection	■	■	■
• Self-centering due to interlocking design	■	■	■
• No impairment of flow		■	
• Turbulence-free		■	
• Also suitable for high pressure systems	■		
• No outgassing of material that can contaminate the process medium	■	■	■
• Temperature-stable from - 273 °C (-459 °F) to +350 °C (+662°F)	■	■	■
• Also sterilizable with superheated steam	■	■	■
• Much more resistant to aggressive media than soft seals media than soft seals	■	■	■
• Easy to switch to other sizes	■	■	■
• Clearly arranged, simplified product range (seal)	■	■	■
• Quick and easy to install and remove	■	■	■
• No risk of damage from excessive tightening torques	■	■	■
• Easy, rapid leak testing via test port	■		
• Frequent reusability of flange and nut	■	■	■
• No detachment of coatings possible and thus no possibility of contamination of medium	■		■
• Easy, unproblematic connection with further pipelines	■	■	■
• Maintenance-free	■	■	■



# SIMPLE: DOCKWEILER

Get your stainless steel tube system well connected



## CONNECTIONS IN ACCORDANCE WITH DIN 11864

### Safety for detachable connections

Aseptic couplings with threaded, clamp or flange connections that comply with DIN 11864 are now the standard connections in tube systems for liquid media in the pharmaceutical industry and biotechnology. Dockweiler offers the components in this range of connections in various surface finishes to fit the tube system in question.

**Material** 1.4404 / 1.4435 / UNS S31603 (316L)  
**Sizes** Imperial, ISO, metric  
**Surfaces** Compliance with safetron and weldtron tube systems or ASME BPE

### Applications

Transport, production and transfer to containers of liquid media in the biotechnology, pharmaceutical, food and cosmetics industries

### Advantages of DIN 11864 connections

- Safe cleaning and sterilization
- Product safety due to tight tolerances
- Near-zero dead space
- Harmonized system

## CLAMP CONNECTIONS

### Dockweiler DIN 32676 clamp connections

Our clamp connections (connecting piece and cover) with standard clamp seal (flat seal with/without lip) are:

- Ready for orbital welding
- With stainless steel clamps in various designs, material 316L, ISO 9001 certified
- Quick and easy to fit

**Material** 1.4404 / 1.4435 / UNS S31603 (316L)  
**Sizes** Imperial, ISO, metric  
**Surfaces** Compliance with safetron and weldtron tube systems or ASME BPE

### Applications

Transport, production and transfer to containers of liquid media in the biotechnology, pharmaceutical, food and cosmetics industries

### Advantages of clamp connections

- Rapid opening and closing of connection
- Safe cleaning and sterilization
- Near-zero dead space

## DOCKWEILER CAP

### Dockweiler Cap

Today's end could be tomorrow's beginning.

The Dockweiler Cap is the smart, flexible way to seal off the ends of your tube installations. It is a new alternative to conventional weld caps.

**Material** 1.4404 / 1.4435 / UNS S31603 (316L)  
**Sizes** Imperial (1/4" to 6")  
**Surfaces** Inside: electropolished or bright finish

### Applications

Semiconductor industry  
 Pharmaceutical industry (pressure testing of systems)  
 Tank and apparatus construction

### Advantages of Dockweiler Cap

- Safety seal (helium leak rate  $1 \times 10^{-9}$  mbar l/s)
- No contamination of system in event of interruption of assembly work (pressure testing)
- No particle contamination from later removal
- Can be extended subsequently, even in ultra-pure areas of production
- Time savings due to quick and easy installation

## ZEROCON®

### ZeroCon®

The new, patented ZeroCon® connection from Dockweiler combines all the advantages of a detachable connection with that of a weld seam.

- Ready for orbital welding
- Available as a complete kit or as individual components

**Material** 1.4435 / UNS S31603 (316L)  
**Sizes** Imperial: 1/4" to 4"  
 ISO: 13,50 mm to 21,30 mm  
 Metric: 6,00 mm to 23,00 mm  
**Surfaces** Inside: electropolished or bright finish

### Applications

Semiconductor industry  
 Pharmaceutical and biotechnology industries

### Advantages of ZeroCon®:

- Tight as a weld seam
- No dead space
- Temperature-stable
- 100% stainless steel
- Maintenance-free

Your local office

**Dockweiler AG**

An der Autobahn 10/20  
19306 Neustadt-Glewe  
Germany

Phone: + 49 38757 58 0  
Fax: + 49 38757 58 222  
E-mail: [sales@dockweiler.com](mailto:sales@dockweiler.com)  
Web: [www.dockweiler.com](http://www.dockweiler.com)

